

showroom interior, NYC

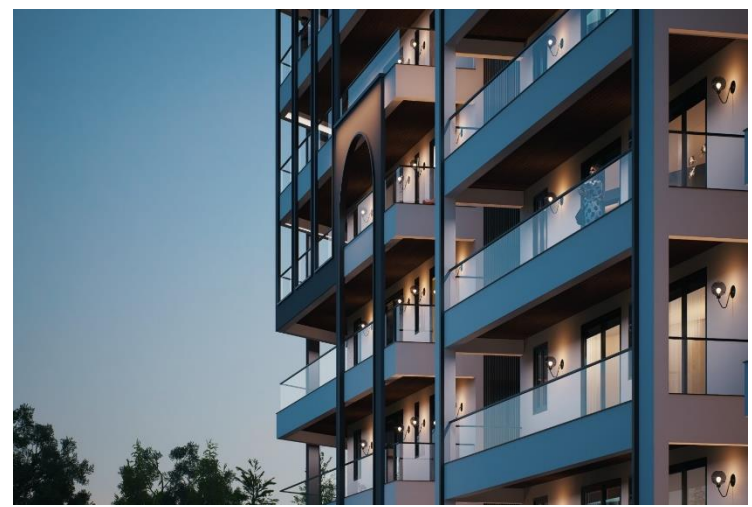


area = 7235 sq.ft.

The installation unfolds as a curated sequence rather than a conventional display—an immersive landscape where product, material, and architecture are inseparable. Conceived as a porous grid, the pavilion uses a suspended lattice framework to dissolve rigid boundaries, allowing sightlines to extend diagonally across the space while subtly guiding movement. At its core, the design negotiates between solidity and lightness. Monolithic volumes in warm metallic finishes anchor the composition, acting as tactile backdrops to the refined sanitary elements. These are counterbalanced by the delicacy of the overhead mesh and vertical light tubes, which introduce a sense of levitation. The lighting is not merely functional; it becomes a spatial device—punctuating volumes, emphasizing verticality, and drawing the eye to moments of interaction.

Materiality plays a critical role in constructing the experience. A palette of brushed copper, muted stone, and deep green marble establishes a dialogue between warmth and restraint. The basins and fixtures are presented almost as artifacts—placed on elevated plinths with generous negative space around them, reinforcing their sculptural quality. This intentional spacing allows each object to be read individually, yet within a cohesive visual language.

**atlantis
heights,
dehradun
musoorie road**



area = 4000 sq.mt.

the building showcases a contemporary-arched aesthetic. it uses a sophisticated palette of charcoal grey, soft beige, and warm wood accents. the standout feature is the rhythmic use of arched balcony frames, which break up the linear geometry and give the facade a timeless, elegant character.

wide, glass-fronted terraces designed to maximize natural light and offer panoramic views of the surrounding greenery.

a gated, high-clearance driveway with integrated spotlights and a minimalist security kiosk, signaling exclusivity and safety.

the use of "vertical greenery" and vibrant purple bougainvillea on the perimeter walls softens the stone and metal structures, creating an "urban oasis" feel.

subtle cove lighting and facade uplighting enhance the building's silhouette, making it an architectural landmark even after sundown.

ssb group housing, lucknow



area = 8 acre.

ssb pratham in amar shaheed path, lucknow is a ready-to-move housing society. it offers apartments in varied budget range. these units are a perfect combination of comfort and style, specifically designed to suit your requirements and conveniences. there are 2bhk, 3bhk and 4bhk apartments available in this project. this housing society is now ready to be called home as families have started moving in. check out some of the features of ssb pratham housing society.

spread over an area of 8 acres, ssb pratham amar shaheed path, lucknow is one of the spacious housing societies in the lucknow region. with all the basic amenities available, ssb pratham fits into your budget and your lifestyle.

hotel veda, bangalore



area = 5135 sq.mt.

a design philosophy that blends high-end urban living with the restorative power of nature. this mid-rise luxury development is a masterclass in "organic luxury," prioritizing light, air, and greenery within a sleek, metallic framework.

organic curves and warm tones unlike the cold, sharp angles of traditional skyscrapers, this building utilizes soft, rounded corners and a warm, copper-gold palette. the vertical bronze-toned fins provide both a rhythmic visual texture and functional solar shading, reflecting the golden hour light to create a glowing landmark.

integrated "living" balconies, the facade is punctuated by deep-set terraces overflowing with lush greenery.

the base of the building is defined by a massive, multi-story glass atrium. the interior features oversized crystal chandeliers that are visible from the street, signaling an uncompromising level of luxury and a seamless transition from the public realm to the private residence.

lifestyle & amenities:

rooftop oasis | an expansive, glass-walled crown likely housing a sky lounge or infinity pool with 360-degree views. |

| indoor-outdoor living | floor-to-ceiling glass walls ensure that every unit feels connected to the horizon. |

| curated landscaping | the ground-level plaza features sculptural art and manicured gardens, creating a "boutique hotel" arrival experience.

hotel veda, gurugram



area = 3850 sq.mt.

"neoclassical modern fusion"

it balances grand, traditional elements at the base with a clean, contemporary residential/hotel structure above.

the ground floor features a striking series of ionic-inspired columns and high-arched glass windows, giving the entrance a sense of luxury and timelessness. above the podium, the design shifts to a modular, symmetrical grid. the use of glass railings and white framing creates a light, airy feel.

every floor incorporates integrated planter boxes, softening the stone and glass with natural textures and promoting a "biophilic" urban design.

the building communicates sophistication and tranquility. the name "veda" often refers to knowledge or wisdom in sanskrit, which aligns with the balanced, orderly, and peaceful aesthetic of the architecture. the warm wood-toned side panels provide a nice contrast to the cool white stone and dark charcoal signage band.



**curve square
mall,
sriganganagar**

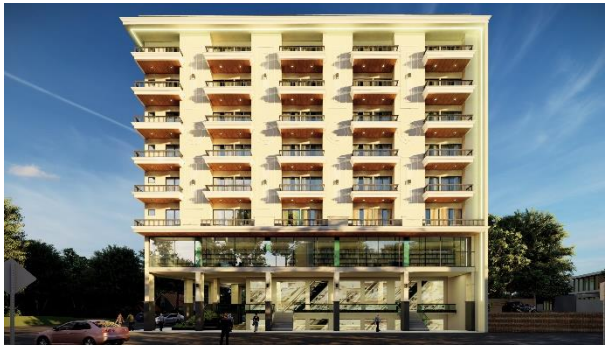


area = 3.91 acre

crafting spaces that elevate the everyday. we poured our passion into designing this vibrant retail and lifestyle hub, envisioned as more than just a building – it's a place for community, commerce, and connection. notice how the natural light floods the interiors and the outdoor spaces invite lingering. great architecture isn't just about structure, it's about experience.

detailing the layers of a modern masterpiece. this project showcases our commitment to innovative façade design, sustainable integration of landscaping, and creating a memorable pedestrian experience. the interplay of solid and void, transparency and texture, was key to achieving this striking presence. a true testament to collaborative design and execution!

akshika residency, ghaziabad



area = 1600 sq.mt.

designed with a nod to neo-classical aesthetics, the facade features majestic white columns and symmetrical geometry. the warm, wood-finished undersides of the balconies contrast beautifully with the crisp, ivory exterior, creating an inviting glow during the golden hour. a perfect blend of high-end retail spaces on the ground levels and luxury residential suites above.

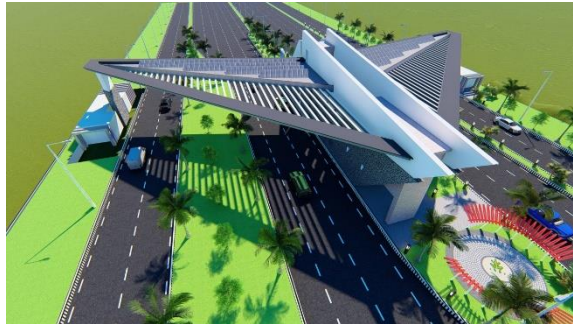
the commercial floors boast floor-to-ceiling glass, offering maximum visibility for businesses and a sleek, modern look.

every residential unit is equipped with a spacious private balcony, designed to offer fresh air and panoramic city views.

situated on a wide, accessible boulevard with ample parking and pedestrian-friendly access.

a sanctuary of calm above the bustle, featuring premium finishes and an elite community atmosphere.

entrance gate for air force station, panchkula



(competition project for panchkula authority)

this aerial perspective showcases a striking architectural entranceway, likely serving as a grand gateway to a community, corporate campus, or even a city. the design employs a bold, modern aesthetic characterized by strong geometric forms and a blend of materials.

the most prominent feature is the cantilevered canopy structure, spanning gracefully over a multi-lane roadway. its angled planes and linear elements create a sense of dynamic movement and lightness, despite its substantial size. the use of louvers or slatted elements on the underside of the canopy suggests a play with light and shadow, potentially designed to create interesting visual patterns on the road below.

adjacent to the main canopy, a more solid, angular building element rises, perhaps housing security, administrative offices, or a welcome center. its crisp lines and varying roof angles contribute to the overall contemporary feel. the combination of open and solid forms provides both visual interest and functional space.

the surrounding landscape design is integrated with the architecture, featuring neatly manicured green spaces, palm trees, and decorative elements that echo the modern theme. the circular paved area with red and white accents, combined with the radial arrangement of planting, creates an inviting focal point, guiding traffic flow and establishing a sense of arrival.

the wide, well-maintained roadways indicate a significant thoroughfare, and the vehicles present provide a sense of scale. the entire composition suggests a thoughtful approach to urban design, where infrastructure and architecture coalesce to create an impressive and functional entry experience.

**zee
cooperative
building, g.
noida**



**(zee network)
area = 1.93 acre**

the project comprises two nearly identical, multi-story rectilinear blocks, each articulated with a prominent, white-framed u-shaped element that wraps around the upper levels. this striking architectural gesture creates a strong visual identity and anchors the building's top. the separation of the two towers opens up a significant central volume, fostering a sense of grandeur and providing a natural light well.

façade and materiality

the façade is predominantly composed of a high-performance glass curtain wall system, featuring a subtle blue tint that reflects the sky and surroundings, providing both aesthetic appeal and potentially contributing to solar control. this transparency maximizes natural light penetration into the interior spaces.

contrasting with the extensive glazing, elements of natural wood or wood-look cladding are strategically introduced, particularly in recessed areas and as accent panels, adding warmth and a tactile quality to the sleek, modern design. these elements are seen integrated with the large white frames, highlighting specific zones.

in essence, this project represents a sophisticated commercial typology that successfully marries contemporary aesthetics with functional planning, creating an iconic twin-tower complex with a strong emphasis on public interaction and environmental integration.



executive office, gonda



(pwd)

the office is organized into two primary functional zones: the work area (desk and seating) and the lounge/waiting area (sofa and accent wall), seamlessly connected within a single open volume. the design intent is clearly to create a space that is both visually impressive for receiving guests and highly functional for the occupant.

*the selection of materials is crucial to the room's character:
wood paneling: a dominant feature is the vertical slatted wood paneling on the right wall, providing a rich, dark backdrop that introduces warmth and texture. this use of wood grounds the space and enhances acoustic quality.*

marble flooring: the floor is clad in a white marble with grey veining, offering a sleek, modern contrast to the dark wood and leather.

lighting design and focal points

the lighting scheme is complex and layered, serving both functional and decorative roles:

cove lighting: recessed linear light strips in the ceiling perimeter provide soft, ambient illumination, emphasizing the clean lines of the dropped ceiling detail.

task/accent lighting: the built-in library shelving is dramatically backlit with warm led strips, turning the collection of books and artifacts into a curated, glowing focal point.

built-in library: the floor-to-ceiling shelving unit, framed in dark wood and glass, serves as both storage and a sophisticated display element, suggesting intellectual pursuits and providing a strong architectural anchor for the room.

furniture: the executive desk is large and monolithic with a dark, rich finish, clearly defining the power center of the room. the visitor chairs are designed with a low profile and curved, ergonomic backs, combining comfort with a modernist aesthetic.

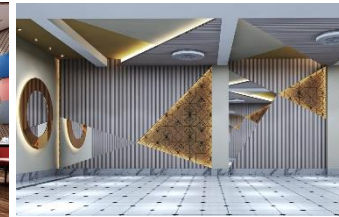
**banquet cum
restaurant,
lucknow**



**(champaran)
area = 1800 sq.ft.**

a commercial building façade that adopts a neo-classical or beaux-arts inspired style, applying a traditional architectural vocabulary to a contemporary vertical structure, likely housing a restaurant and banquet facility.

the building stands tall against a backdrop of modern, high-density residential towers, highlighting the design's deliberate stylistic contrast. the foreground includes a basic streetscape and minimal, low-level foliage, grounding the otherwise ornate vertical mass into the urban environment. the integration of subtle lighting fixtures emphasizes the architectural details and entrance points during the evening.



**showroom,
lalganj**



area = 2000 sq.ft.

a commercial building façade that adopts a neo-classical or beaux-arts inspired style, applying a traditional architectural vocabulary to a contemporary vertical structure, likely housing a restaurant and banquet facility.

the building stands tall against a backdrop of modern, high-density residential towers, highlighting the design's deliberate stylistic contrast. the foreground includes a basic streetscape and minimal, low-level foliage, grounding the otherwise ornate vertical mass into the urban environment. the integration of subtle lighting fixtures emphasizes the architectural details and entrance points during the evening.



mini clinic, ludhiana



(taskar)
area = 1200 sq.ft.

This design immediately establishes a strong brand identity through a high-contrast, modern aesthetic focused on maximizing product visibility and optimizing customer flow.

Dominant Feature: The massive, bright red feature wall is the immediate focal point upon entry, using the brand's primary color (Taskar Medicines) for powerful visual impact. This wall acts as a large-scale graphic and marketing billboard, setting the store's energetic tone.

Contrast: The intense red is dynamically balanced by clean white floors and ceilings, and muted light-grey walls, ensuring the products and the signage pop without visual clutter. The high-gloss white floor enhances the lighting and adds a sense of sterility and professionalism.

It's a retail architecture where strategic design choices (color, layout, lighting) are used to support brand goals, optimize product display, and enhance the customer experience.



**residence,
cyprus**



area = 7500 sq.ft.

a stunning, large-scale private residence that embodies high-end contemporary architecture, distinguished by its dynamic volumetric composition, rich material contrasts, and intensive biophilic integration. the building is a complex, asymmetrical composition of intersecting rectilinear blocks, creating a sense of visual depth and layering. it utilizes dramatic cantilevers (such as the upper volume projecting over the main entrance) and deep recesses to define the façade. this volumetric play results in multiple shaded terraces and balconies, optimizing the building's interaction with light and climate. the overall form avoids a monolithic appearance, instead favoring a fragmented, sculptural aesthetic.



residence, cyprus



area = 8700 sq.ft.

a grand, symmetrical residential compound that marries neo-classical formality with contemporary tropical accents. the design creates a powerful sense of order, elegance, and balanced massing across the main house and its ancillary structures.

the main residence is defined by its strict central symmetry, anchored by a prominent, recessed entrance bay that rises through two stories. the overall massing is broad and horizontal, typical of a large villa or estate house. the structure is capped by a hip roof with a dark, heavy cladding (such as slate or dark shingles), providing a traditional, stabilizing element that contrasts with the lighter, modern walls below.

this design successfully mediates between the formal language of classical architecture and the clean lines and material transparency of modern design, resulting in a sophisticated, well-proportioned residential statement suited for a stately, warm-climate setting.



**residence,
lucknow**



area = 5000 sq.ft.

the design employs a neoclassical aesthetic, evidenced by its use of strong horizontal and vertical lines, a light, neutral color palette (predominantly white or pale gray), and formal, balanced composition. the villa is secured by a low-height but decorative metal fence set atop a substantial base, punctuated by large, classically-detailed piers. this boundary maintains privacy while allowing a visual connection to the property. landscaping, including palm trees and low-level shrubbery, is minimal but strategically placed to complement the structure's formality. the towering high-rise buildings in the background place this design within a dense, perhaps urban or suburban, mixed-use environment, making the villa a distinguished architectural statement within its context. this design successfully bridges traditional classical architecture with modern construction and sensibilities, resulting in a stately, opulent, and visually impressive residential structure.



**residence,
sunderbani**



area = 4800 sq.ft.

the house is designed as an interlocking composition of stacked, rectilinear volumes. the lower levels establish a heavy, grounded base, while the upper floor features a dramatic cantilever, creating a deep overhang that shields the lower façade. this volumetric interplay generates complexity and visual interest. the composition is capped by a roof terrace with a pergola, extending the usable outdoor space. this residence is a rigorous study in material contrast and volumetric composition, achieving a powerful and luxurious statement through dark, grounded masses and light, transparent floating volumes.



**residence,
lucknow**

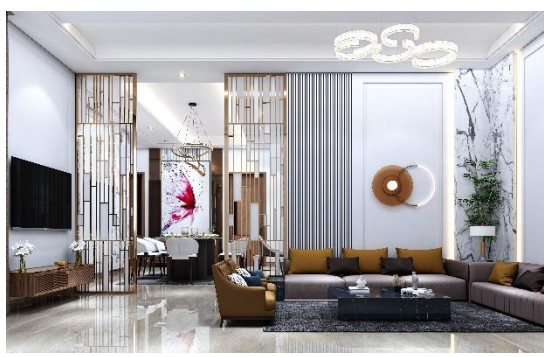


area = 5000 sq.ft.

a sophisticated, multi-level private residence that exemplifies contemporary villa architecture with a strong emphasis on biophilic design. the building is a dynamic composition of intersecting volumes, rich material contrasts, and seamlessly integrated greenery, creating a harmonious blend of built form and natural elements. the residence is a complex arrangement of stacked and interlocking rectilinear volumes, creating deep recesses, dramatic cantilevers, and varied rooflines. this volumetric play results in a highly sculptural form, articulated by alternating projections and setbacks that define different functional zones. the overall massing suggests a generous program, likely accommodating multiple living areas, terraces, and private spaces.



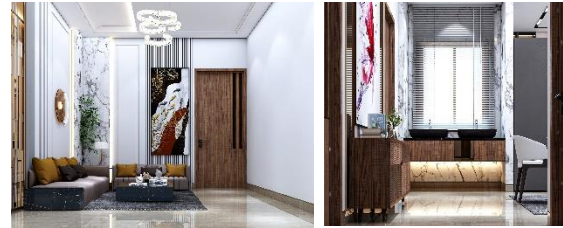
**residence,
lucknow**



Interior

This luxurious living space masterfully blends modern aesthetics with functional design, creating an open yet clearly defined environment. Beyond the dividing screens, the dining area is visible, featuring a sleek dining table surrounded by modern chairs. The space is crowned by a captivating chandelier, echoing the contemporary design of the main living area's lighting fixtures. A vibrant, large-scale abstract artwork featuring a butterfly in shades of red and purple adds a dynamic splash of color and artistic flair to the dining space, visible from the living room.

Overhead, a series of contemporary circular chandeliers provides ample, diffused lighting, enhancing the room's airy and sophisticated ambiance. The consistent use of warm metallic accents throughout, from the screen dividers to the lighting fixtures and decor, ties the entire design together, creating a cohesive and exceptionally refined interior.



**hotel cum
banquet,
lucknow**



area = 10000 sq.ft.

a showcase two distinct architectural compositions: a modern, luxurious residential/commercial interior and a contemporary hotel facade. both exhibit careful attention to material, lighting, and spatial definition.

open-concept with defined zones: the space operates on an open-concept plan, yet the living area is clearly segregated from the dining area by a pair of tall, vertical metal lattice screens finished in a warm gold/brass tone. this element is crucial, offering visual porosity (allowing light and glimpses through) while maintaining spatial definition, which is a classic architectural technique for breaking up large, continuous spaces.

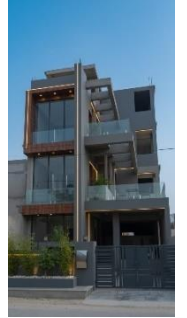
axis and view: the main axis of the space leads the eye from the living room across the metallic dividers toward the dining area, which is highlighted by a dramatic, colorful artwork. this establishes a visual hierarchy and a clear focal point within the secondary zone.

facade cladding: the main exterior surface is a smooth, light-colored material (white or light grey composite panel or stucco), providing a clean, contemporary canvas.

glass and openings: large expanses of glass curtain wall are utilized, especially on the lower floors, to offer maximum visibility into the lobby and commercial spaces. the upper floors feature a more traditional pattern of smaller, recessed rectangular windows.



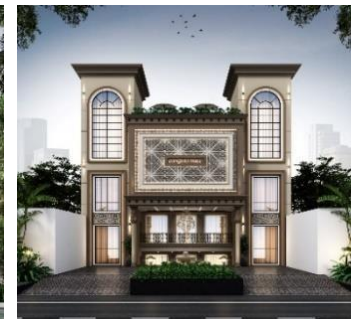
Project's gallery



Project's gallery



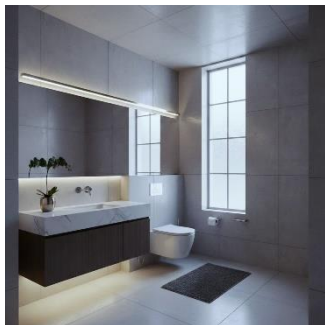
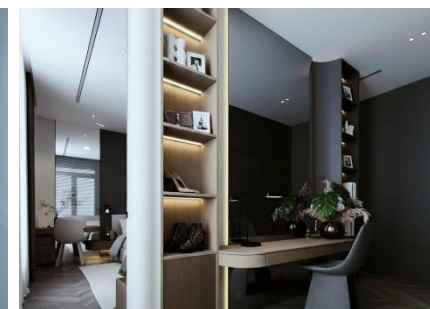
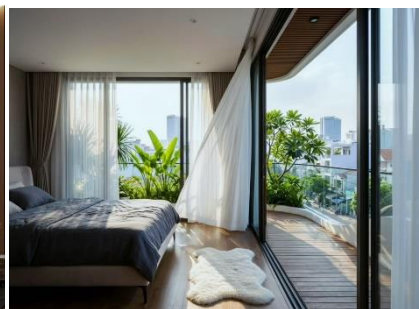
Project's gallery



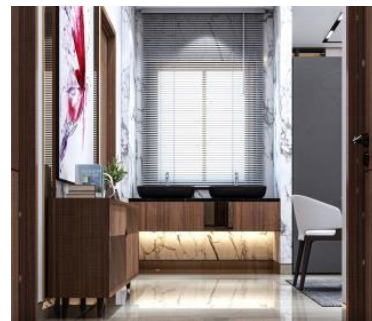
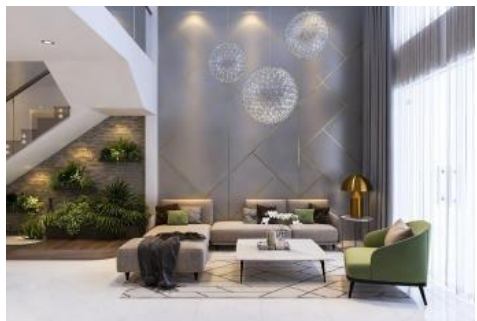
Project's gallery



Project's gallery



Project's gallery



Project's gallery



Project's gallery

